

Furniture Plan For:

ACCELERATED SCHOOLS LIBRARY 1ST FL

DATE: 5/5/2021
 DRAWN BY: NATHAN WEDELL
 SCALE: 3/32" = 1'
 JOB NO. : ACC05.05.21-LIBRARY 1ST FL

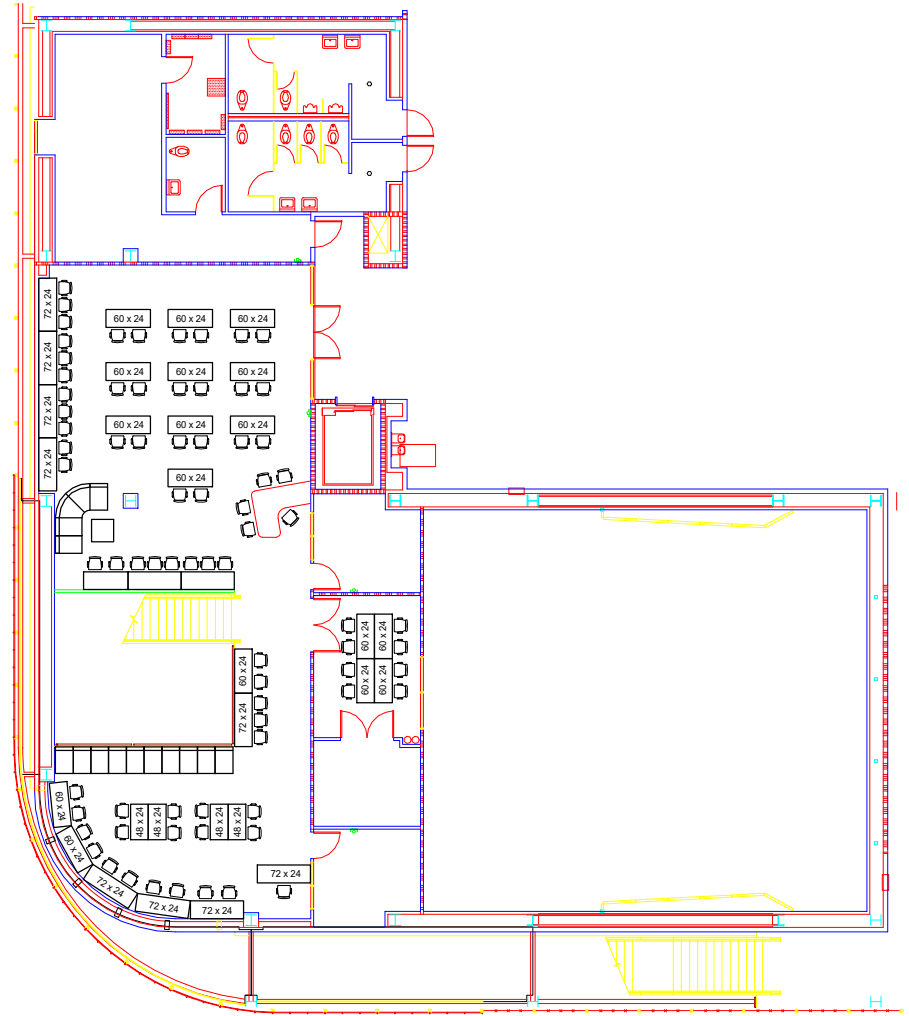
APPROVED BY:
 DATE:



Talimar Systems

3105 W Alpine St.
 Santa Ana, CA 92704
 800.776.7650
 714.557.4884
 714.557.6107 Fax
 nathan@talimarsystems.com

THIS PRINT IS THE PROPERTY OF TALIMAR SYSTEMS. THIS PRINT IS ALSO SUBJECT TO RETURN UPON REQUEST. COPIES OF ALL OF PART OF THIS PRINT MAY NOT BE MADE WITHOUT WRITTEN CONSENT OF TALIMAR SYSTEMS. WRITTEN DIMENSIONS TAKE PRECEDENCE OVER SCALED DIMENSIONS ON THIS PRINT. CONTRACTORS WILL VERIFY AND BE RESPONSIBLE FOR ALL BUILDING DIMENSIONS AND CONDITIONS ON THE JOB.



Furniture Plan For:

ACCELERATED SCHOOLS LIBRARY 2ND FL

DATE: 5/5/2021
DRAWN BY: NATHAN WESDELL
SCALE: CUSTOM
JOB NO. : ACC05.05.21-LIBRARY 2ND FL

APPROVED BY:
DATE:



Talimar Systems

3105 W Alpine St.
 Santa Ana, CA 92704
 800.776.7650
 714.557.4884
 714.557.6107 Fax
 nathan@talimarsystems.com

THIS PRINT IS THE PROPERTY OF TALIMAR SYSTEMS. THIS PRINT IS ALSO SUBJECT TO RETURN UPON REQUEST. COPIES OF ALL OF PART OF THIS PRINT MAY NOT BE MADE WITHOUT WRITTEN CONSENT OF TALIMAR SYSTEMS. WRITTEN DIMENSIONS TAKE PRECEDENCE OVER SCALED DIMENSIONS ON THIS PRINT. CONTRACTORS WILL VERIFY AND BE RESPONSIBLE FOR ALL BUILDING DIMENSIONS AND CONDITIONS ON THE JOB.



3105 WEST ALPINE
 SANTA ANA, CA 92704
 (714) 557-4884

ACCELERATED SCHOOLS - LIBRARY
 4000 S. MAIN STREET
 LOS ANGELES CA 90037

CONTACT: TOM NIZETICH
 PHONE: 323-235-6343 X2830
 CELL:
 E-MAIL: tnizetich@accelerated.org

ACCELERATED SCHOOLS - LIBRARY - SUMMARY-5/7/2021

QUANTITY	PRODUCT DESCRIPTION	UNIT NET	EXTENDED NET
23	Rectangular Table Top only 48x24 COLOR: TBD	\$ 103.66	\$ 2,384.07
24	Rectangular Table Top only 60x24 COLOR: TBD	\$ 103.66	\$ 2,487.72
14	Rectangular Table Top only 72x24 COLOR: TBD	\$ 103.66	\$ 1,451.17
23	Flip-Top Nesting Table Base for use with 48" tops COLOR: TBD	\$ 310.34	\$ 7,137.93
17	Flip-Top Nesting Table Base for use with 60" tops COLOR: TBD	\$ 322.76	\$ 5,486.90
1	Flip-Top Nesting Table Base for use with 72" tops COLOR: TBD	\$ 335.79	\$ 335.79
23	Modesty Panel for 48" base COLOR: TBD	\$ 37.24	\$ 856.55
17	Modesty Panel for 60" base COLOR: TBD	\$ 40.97	\$ 696.41

QUANTITY	PRODUCT DESCRIPTION	UNIT NET	EXTENDED NET
1	Modesty Panel for 72" base COLOR: TBD	\$ 45.31	\$ 45.31
40	"U Shaped" Leg 24"W x 41"H COLOR: TBD	\$ 92.48	\$ 3,699.31
80	Connector Beam Bracket (pair) COLOR: TBD	\$ 41.59	\$ 3,326.90
14	Silver Support Beam for 60" Desk Top COLOR: TBD	\$ 38.48	\$ 538.76
26	Silver Support Beam for 72" Desk Top COLOR: TBD	\$ 47.79	\$ 1,242.62
96	"Agenda Plus" Sled Base Armless Stack Chair COLOR: TBD	\$ 73.24	\$ 7,031.17
49	"Agenda" Armless Stool - 30"h (not stackable) COLOR: TBD	\$ 93.72	\$ 4,592.48
23	"Fuse" Single Seat; no arms 24x30x31h COLOR: TBD	\$ 301.03	\$ 6,923.79
8	"Fuse" 45° Corner Seat 31x28x31h COLOR: TBD	\$ 299.17	\$ 2,393.38
5	30" Cube Laminate Coffee Table w/ Silver Base COLOR: TBD	\$ 310.66	\$ 1,553.28
5	Horizontal Mesh Back Task Chair, Synchro-Tilt Mechanism COLOR: BLACK	\$ 158.28	\$ 791.38

Total extended net price:	\$ 52,974.93
Delivery & Installation:	\$ 6,621.87
Tax: 9.50%	\$ 5,661.70
TOTAL:	\$ 65,258.50

50% deposit required on all orders. All orders final.

Authorized by: _____ Date: _____

QUANTITY	PRODUCT DESCRIPTION	UNIT NET	EXTENDED NET
	signature		
	print name		



THE
ACCELERATED
SCHOOLS

TALIMAR SYSTEMS, INC.

3105 W. ALPINE
SANTA ANA, CA 92704
(714) 557-4884 FAX (714) 557-6107



PROJECT ADDRESS:

4000 S. MAIN STREET

LOS ANGELES CA 90037

LOCATION:

LIBRARY 1ST & 2ND FLOOR

QTY: 4 (AREAS)

ITEM NUMBER:

TAL-AGENDA

Finish Options:

Single Seat



DESCRIPTION:

COUCH & LOUNGE

STYLE/MODEL NO.:

0879, 5879

DIMENSIONS:

24X30X31



**THE
ACCELERATED
SCHOOLS**

TALIMAR SYSTEMS, INC.

3105 W. ALPINE
SANTA ANA, CA 92704
(714) 557-4884 FAX (714) 557-6107



PROJECT ADDRESS:

4000 S. MAIN STREET

LOS ANGELES CA 90037

LOCATION:

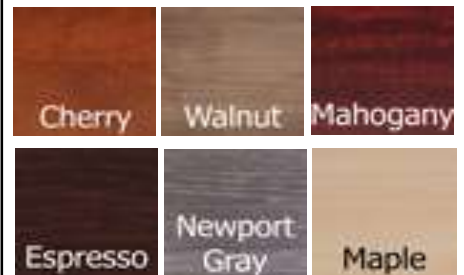
LIBRARY 1ST & 2ND FLOOR

QTY: 41

ITEM NUMBER:

TALFLIP

Finish Options:



WHITE



DESCRIPTION:

FLIP TOP TABLES W/ MODESTY

STYLE/MODEL NO.:

84-FLTFP, 06-FLTFP, 27-FLTFP

DIMENSIONS:

48X24, 60X24, 72X24



THE
ACCELERATED
SCHOOLS

TALIMAR SYSTEMS, INC.

3105 W. ALPINE
SANTA ANA, CA 92704
(714) 557-4884 FAX (714) 557-6107



PROJECT ADDRESS:

4000 S. MAIN STREET

LOS ANGELES CA 90037

LOCATION:

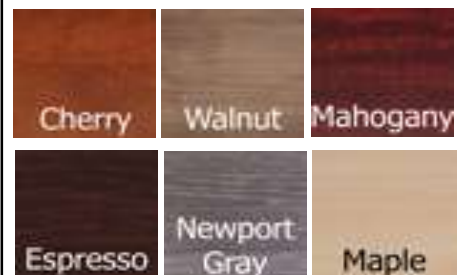
LIBRARY 1ST & 2ND FLOOR

QTY: 20

ITEM NUMBER:

TALTALL

Finish Options:



WHITE

DESCRIPTION:

HIGH TOP TABLES

STYLE/MODEL NO.:

1442-U-GEKTLP

DIMENSIONS:

60X24, 72X24



THE
ACCELERATED
SCHOOLS

TALIMAR SYSTEMS, INC.

3105 W. ALPINE
SANTA ANA, CA 92704
(714) 557-4884 FAX (714) 557-6107



PROJECT ADDRESS:

4000 S. MAIN STREET

LOS ANGELES CA 90037

LOCATION:

LIBRARY 1ST & 2ND FLOOR

QTY: 96/49

ITEM NUMBER:

TAL-AGENDA

Finish Options:

BLACK
BLUE
GREEN
WHITE

DESCRIPTION:

LOW & HIGH SEATING SLED BASE

STYLE/MODEL NO.:

0803, LOOTS5803

DIMENSIONS:

N/A



THE
ACCELERATED
SCHOOLS

TALIMAR SYSTEMS, INC.

3105 W. ALPINE
SANTA ANA, CA 92704
(714) 557-4884 FAX (714) 557-6107



PROJECT ADDRESS:

4000 S. MAIN STREET

LOS ANGELES CA 90037

LOCATION:

LIBRARY 1ST & 2ND FLOOR

QTY: 5

ITEM NUMBER:

TAL-AGENDA

Finish Options:

BACK:

BLACK

GREY

SEAT:

RED

GREEN

BLUE

PURPLE

LIGHT GREY

DARK GREY

BLACK

DESCRIPTION:

TEACHER TASK CHAIR

STYLE/MODEL NO.:

6656B

DIMENSIONS:

N/A